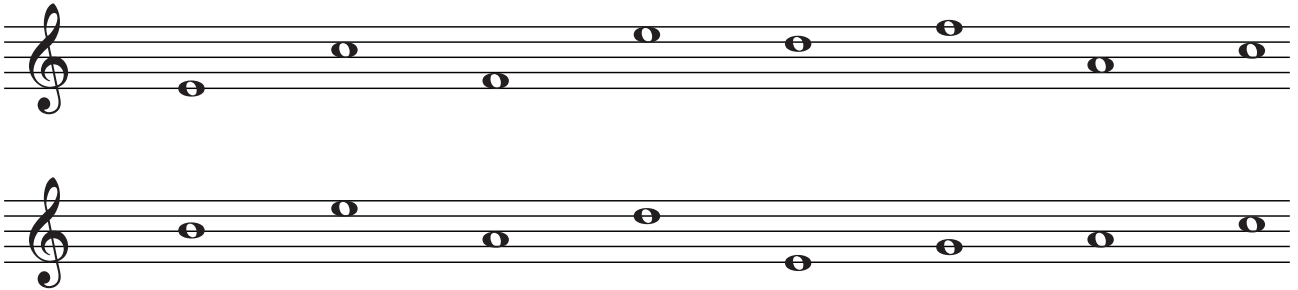
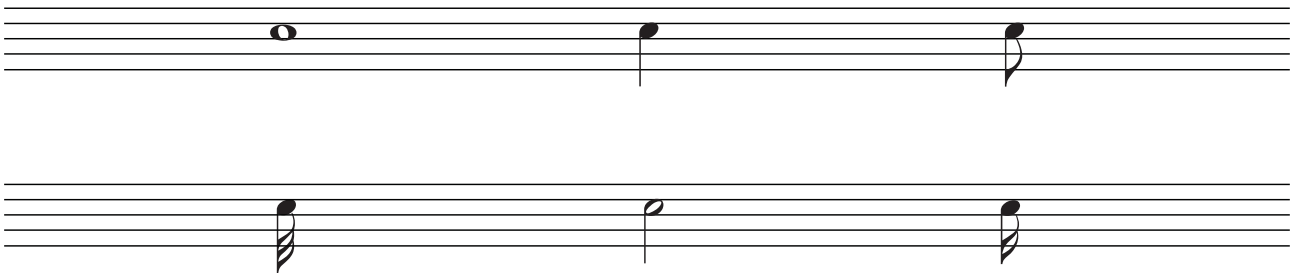


TEORIA

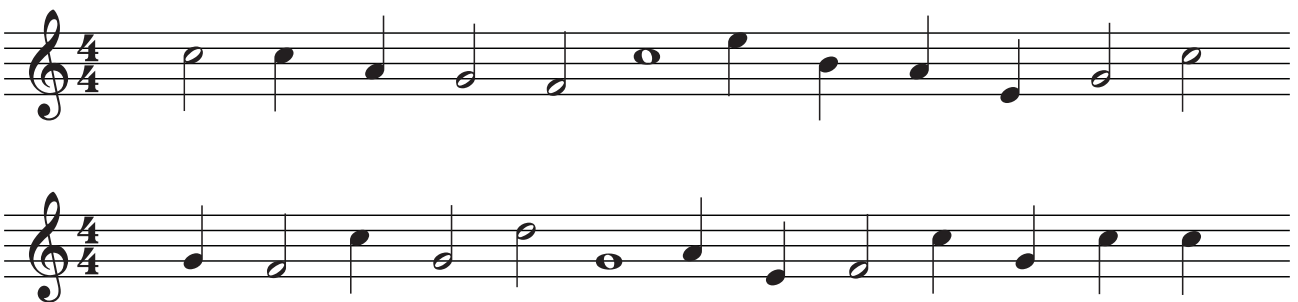
1. Escriure el nom de les notes:



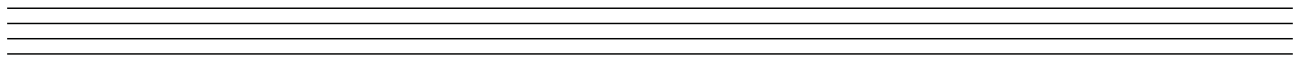

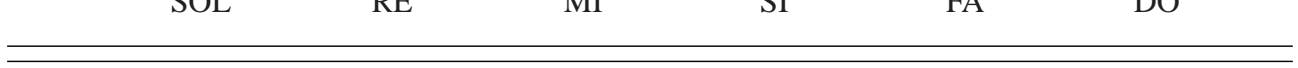
2. Escriure el nom de les figures:

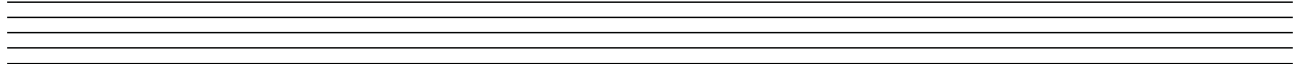




3. Escriure les línies divisòries:

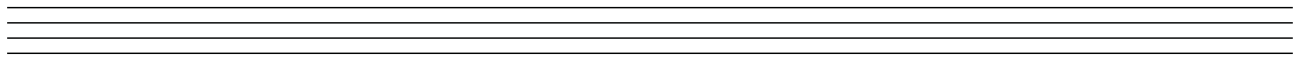

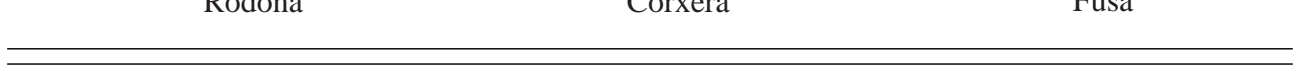


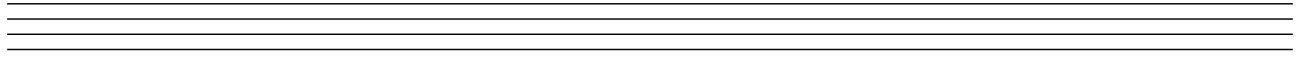


1. Escriure les notes:

| | | | | | |
|--|----|-----|----|----|----|
| MI | DO | SOL | FA | RE | LA |
|  | | | | | |
|  | | | | | |
|  | | | | | |

| | | | | | |
|--|----|----|----|----|----|
| SOL | RE | MI | SI | FA | DO |
|  | | | | | |
|  | | | | | |
|  | | | | | |

2. Escriure els silencis de:

| | | |
|--|-------|-------------|
| Blanca | Negra | Semicorxera |
|  | | |
|  | | |
|  | | |

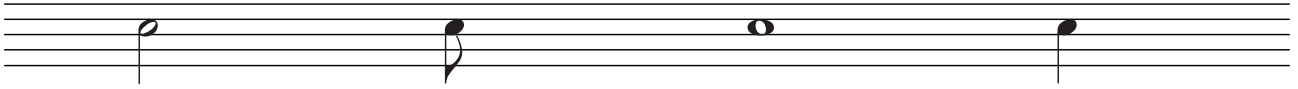
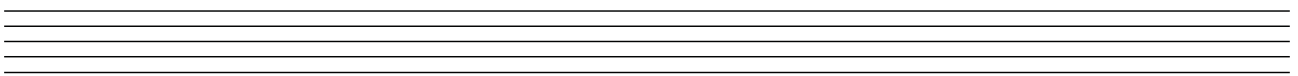
| | | |
|--|---------|------|
| Rodona | Corxera | Fusa |
|  | | |
|  | | |
|  | | |

3. Escriure les figures:



| | | |
|--|--------|---------|
| Negra | Rodona | Corxera |
|  | | |
|  | | |
|  | | |

| | | |
|--|--------|----------|
| Fusa | Blanca | Semifusa |
|  | | |
|  | | |
|  | | |

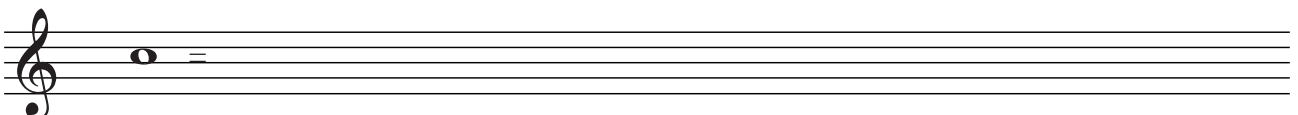
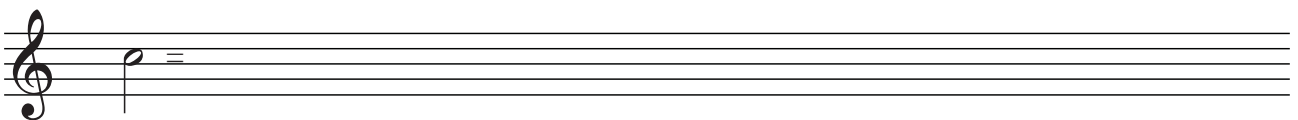
1. Escriure els silencis corresponents a les figures:

2. Escriure les línies divisòries:

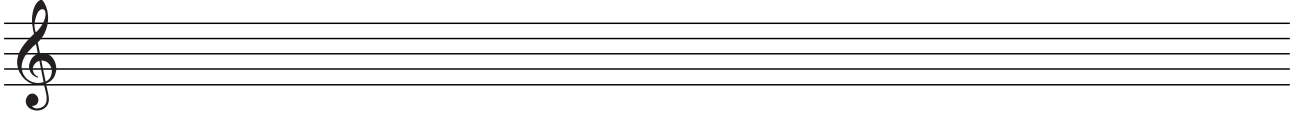



3. Equivalència fins a les semicorxeres:

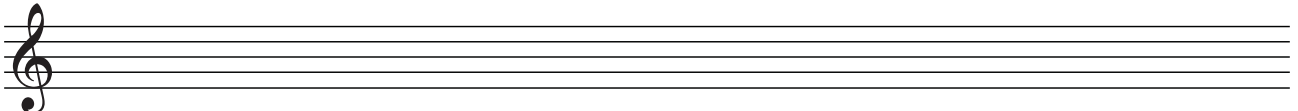



4. Escriure les notes:

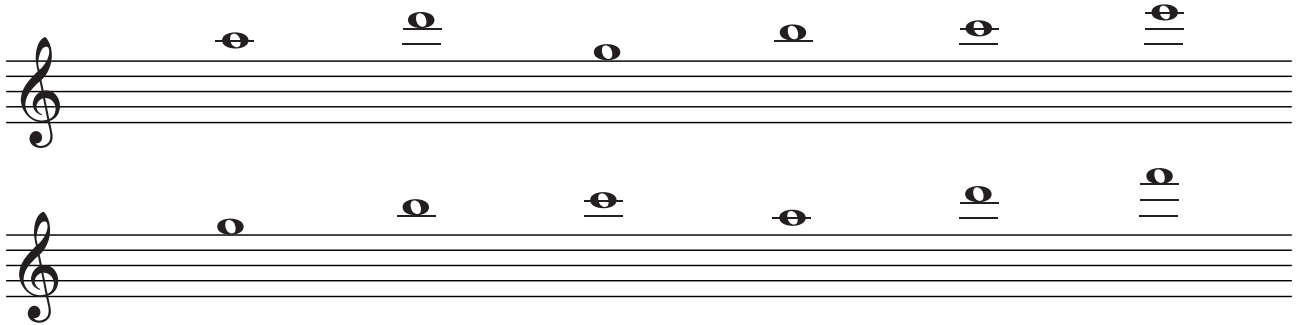
| | | | | | |
|--|----|----|----|----|-----|
| | FA | RE | MI | DO | SOL |
|--|----|----|----|----|-----|



| | | | | | |
|--|----|----|----|----|----|
| | SI | MI | LA | RE | DO |
|--|----|----|----|----|----|



1. Notes addicionals superiors:

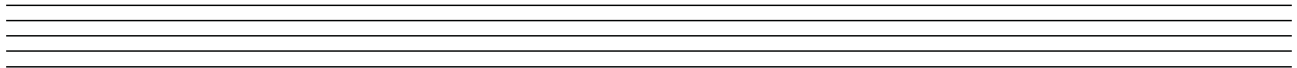


2. Escriure les figures i notes correctament:

LA NEGRA

SOL RODONA

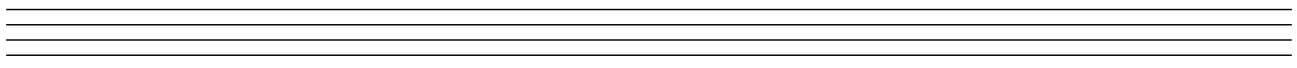
FA BLANCA



RE-SOL CORXERES

SI NEGRA

DO CORXERA

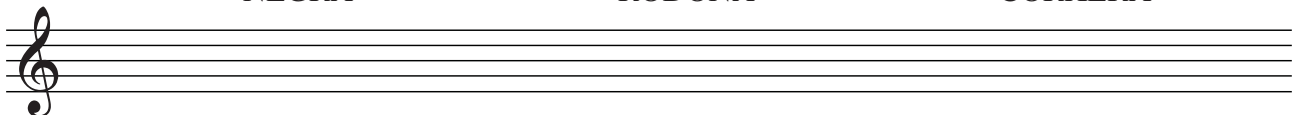


3. Escriure els silencis de:

NEGRA

RODONA

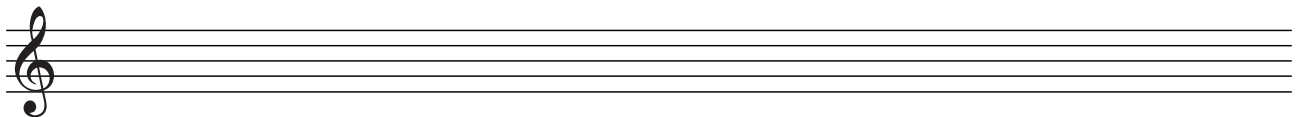
CORXERA



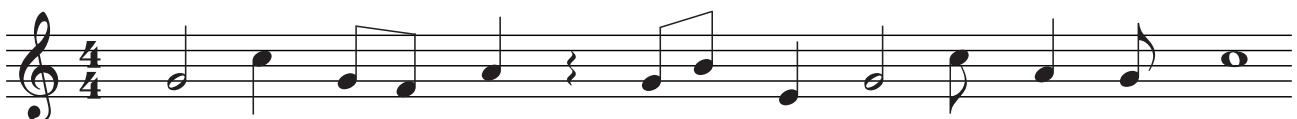
BLANCA

FUSA

SEMICORXERA

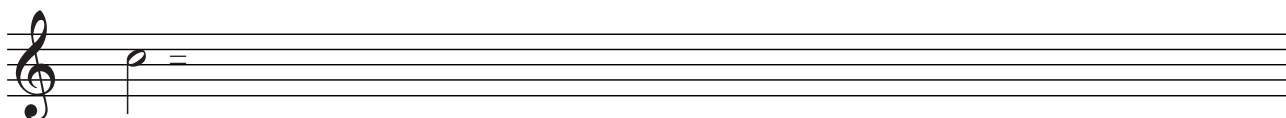


4. Escriure les línies divisòries:

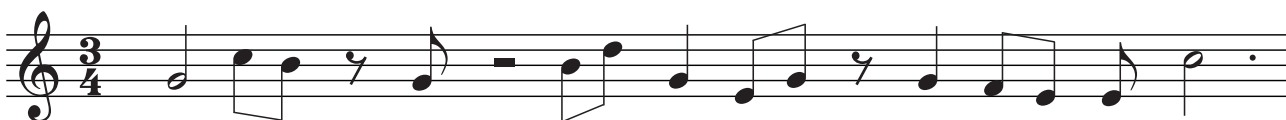




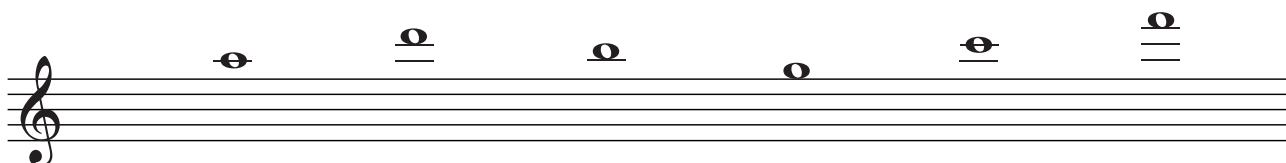
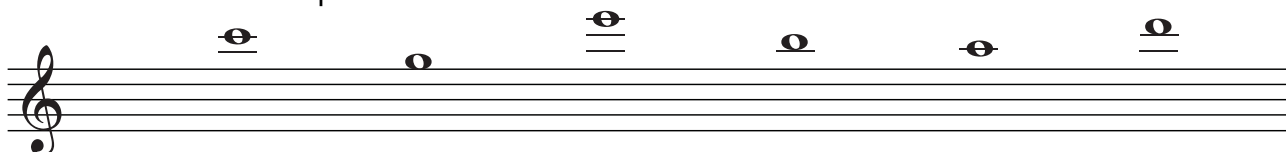

1. Equivalència fins a les semifuses:



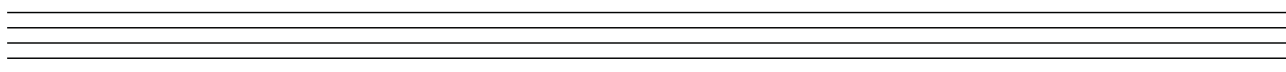
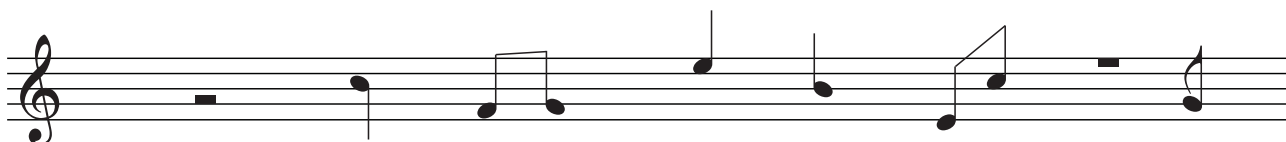
2. Escriure les línies divisòries:



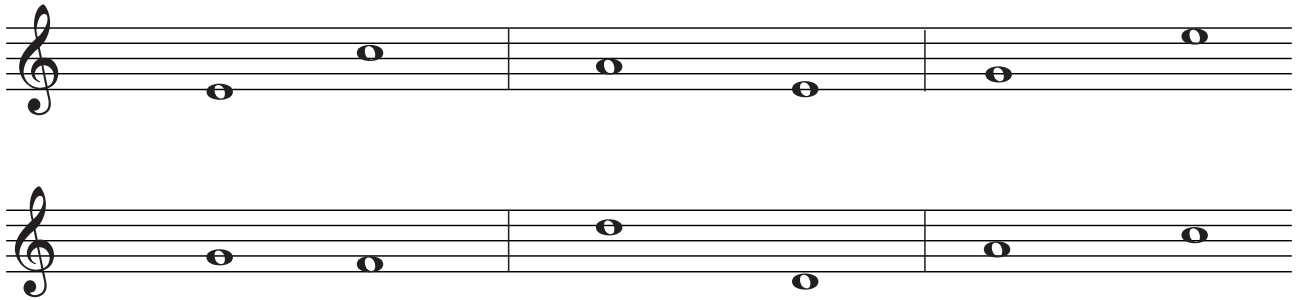
3. Notes addicionals superiors:



4. Escriure correctament:



1. Intervals:

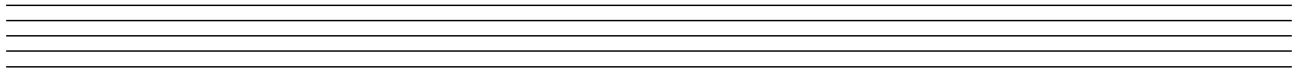


2. Escriure els silencis de:

BLANCA

SEMIFUSA

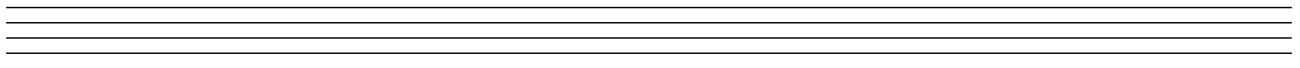
RODONA



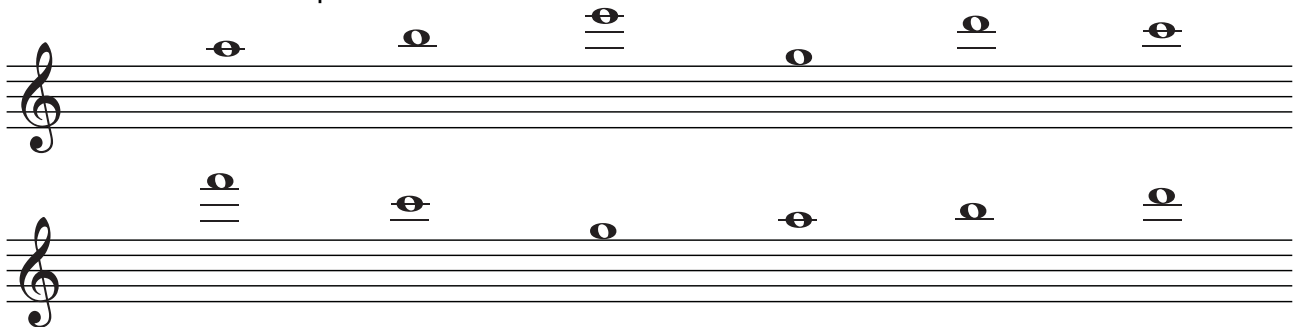
SEMICORXERA

NEGRA

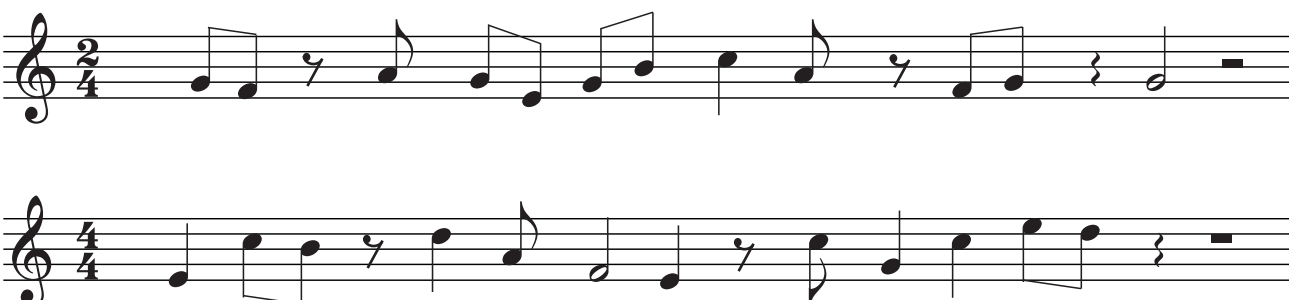
CORXERA



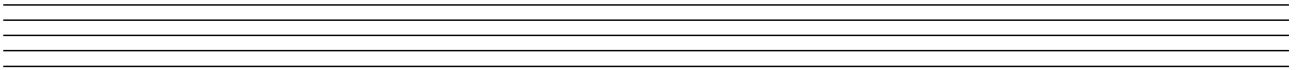
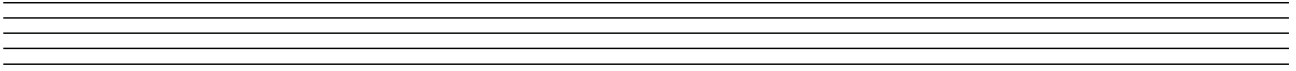
3. Notes addicionals superiors:



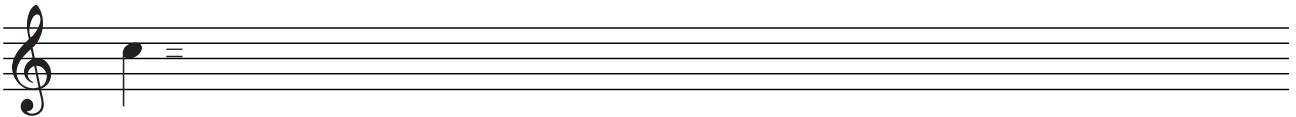
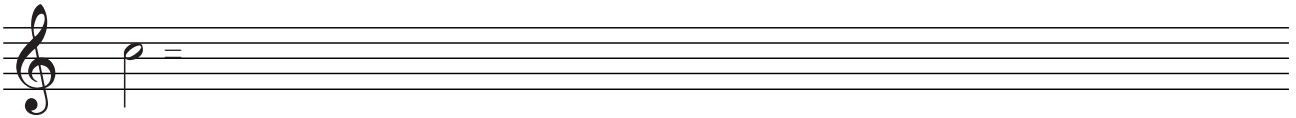
4. Escriure les línies divisòries:



1. Omplir el compàs $\frac{4}{4}$ amb 6 i 7 figures:



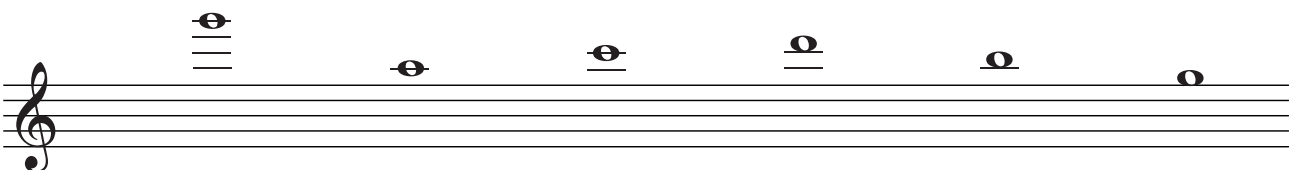
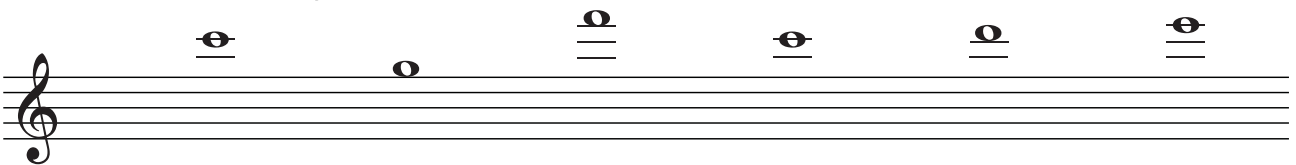
2. Equivalència fins a les semifuses:



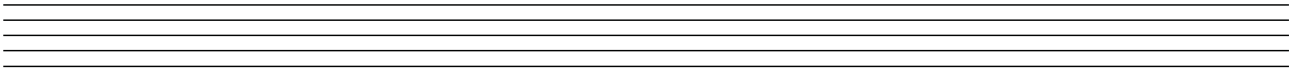
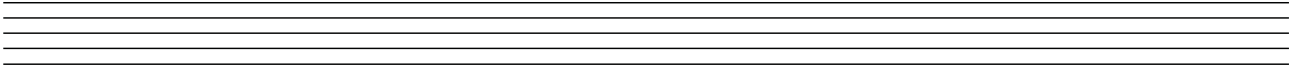
3. Intervals:



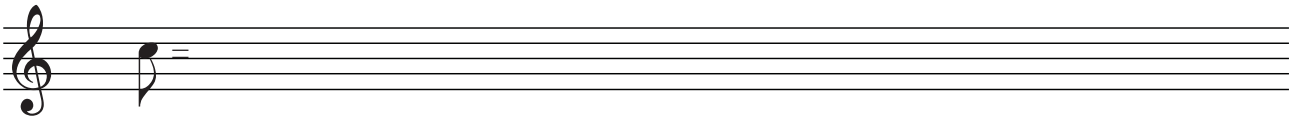
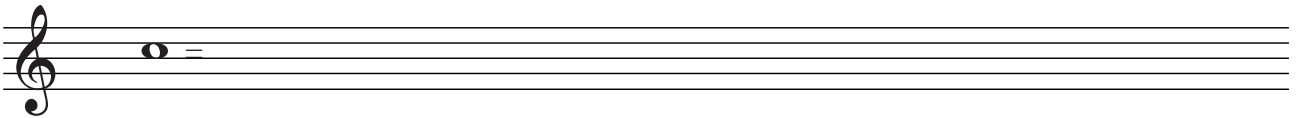
4. Notes addicionals superiors:



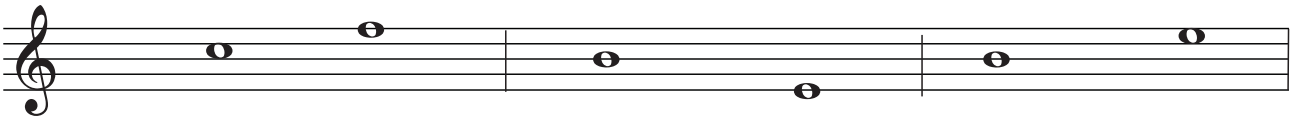
1. Omplir el compàs $\frac{3}{4}$ amb 7 i 8 figures:



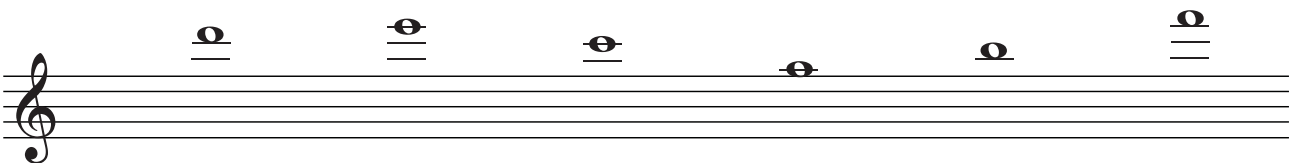
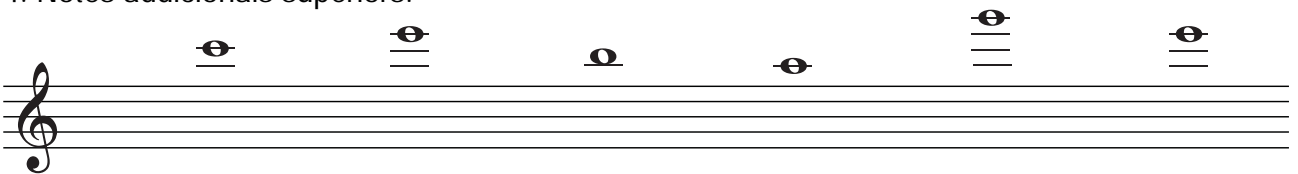
2. Equivalència fins a les semifuses:



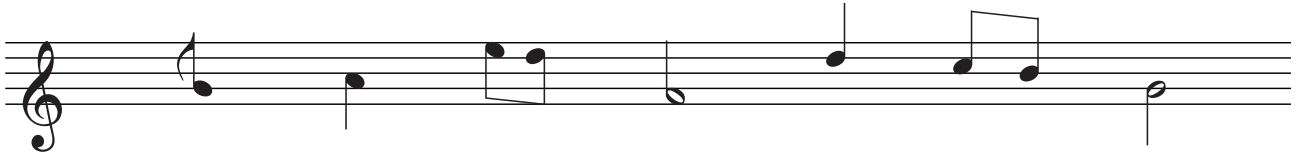
3. Intervals:





4. Notes addicionals superiors:



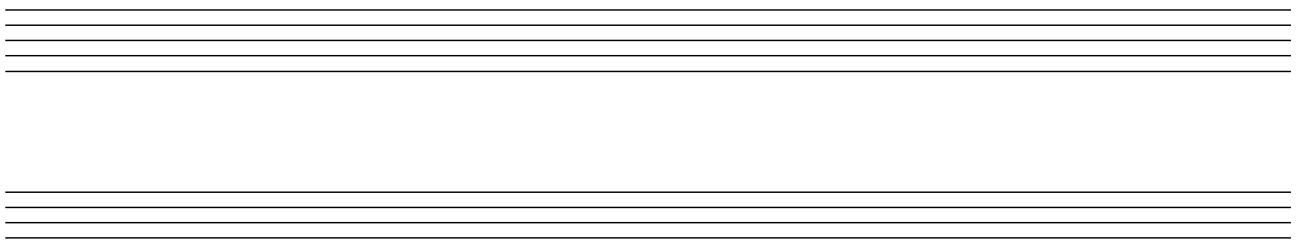
1. Escriure correctament:



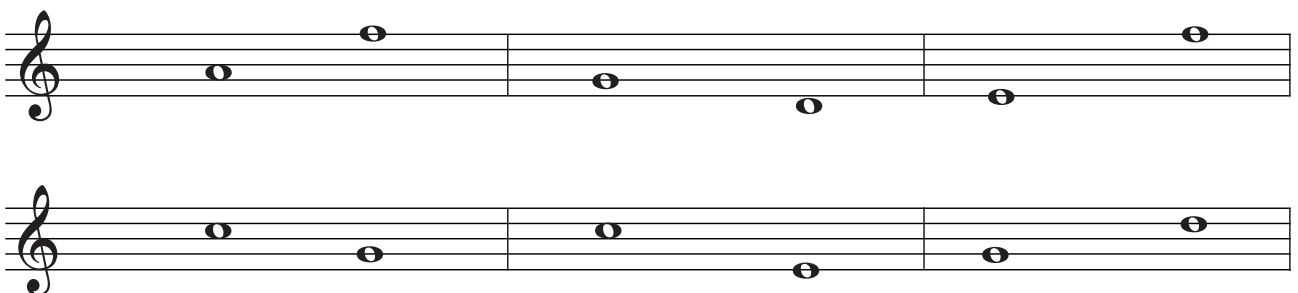

2. Escriure les línies divisòries:

3. Omplir el compàs $\frac{4}{4}$ amb 10 i 11 figures:



4. Intervals:



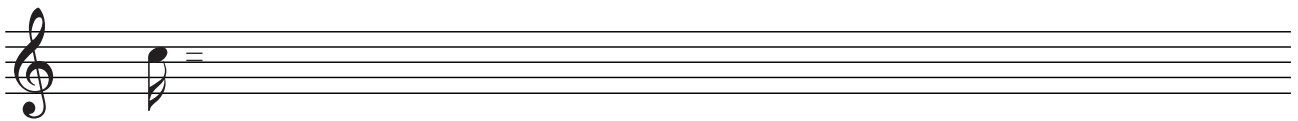
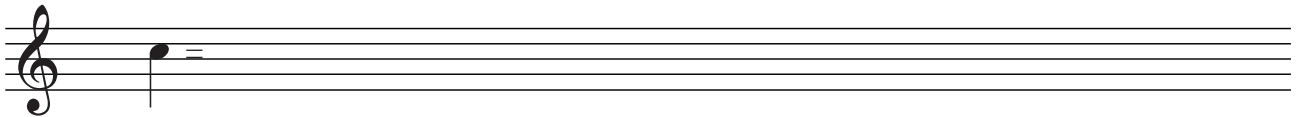
1. Dividir la melodia en frases i assenyalar si els seus finals són suspensius o conclusius:



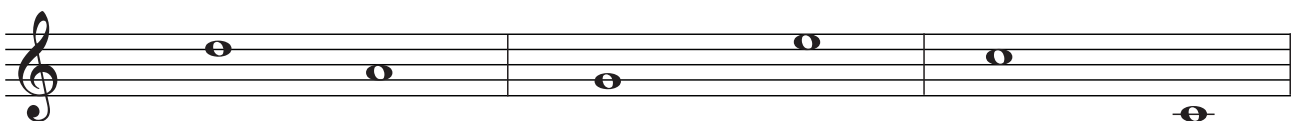
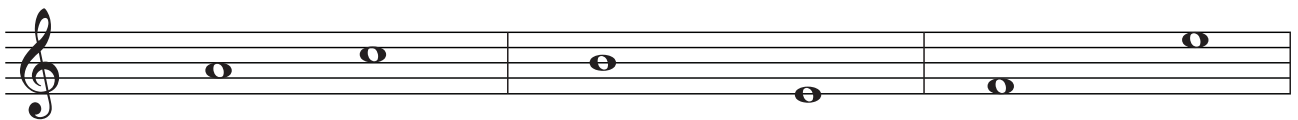
2. Escriure les línies divisòries:



3. Equivalència fins les semifuses:



4. Intervals:

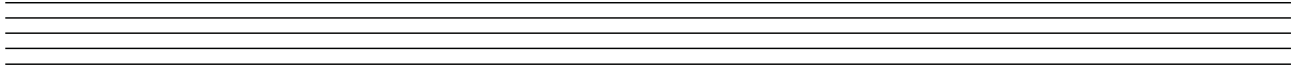


1. Escriure els silencis de:

BLANCA

RODONA

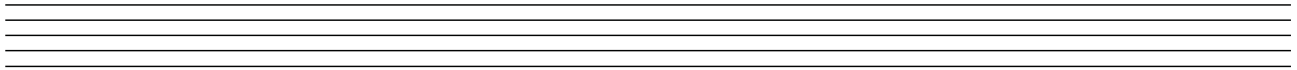
SEMIFUSA



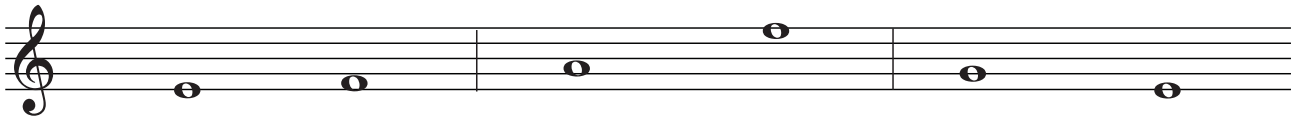
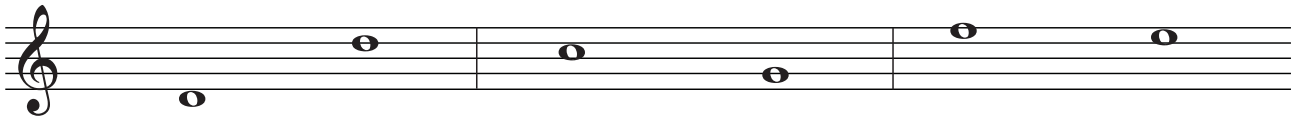
FUSA

SEMICORXERA

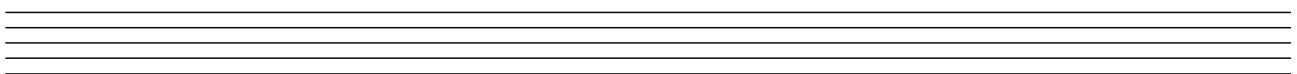
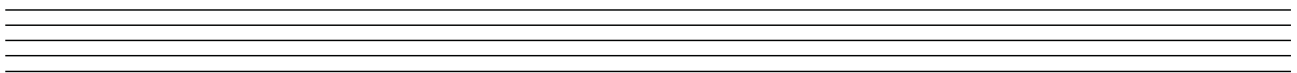
CORXERA



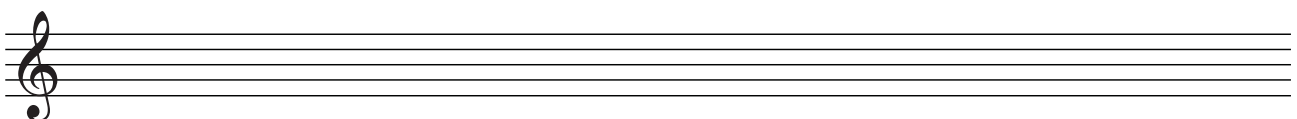
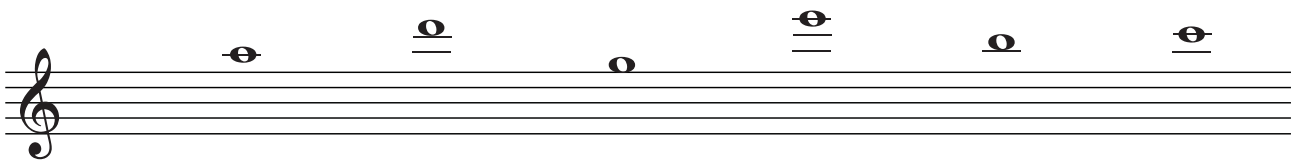
2. Intervals:



3. Omplir el compàs $\frac{3}{4}$ amb 9 i 10 figures:



4. Notes addicionals superiors:



DO

SOL

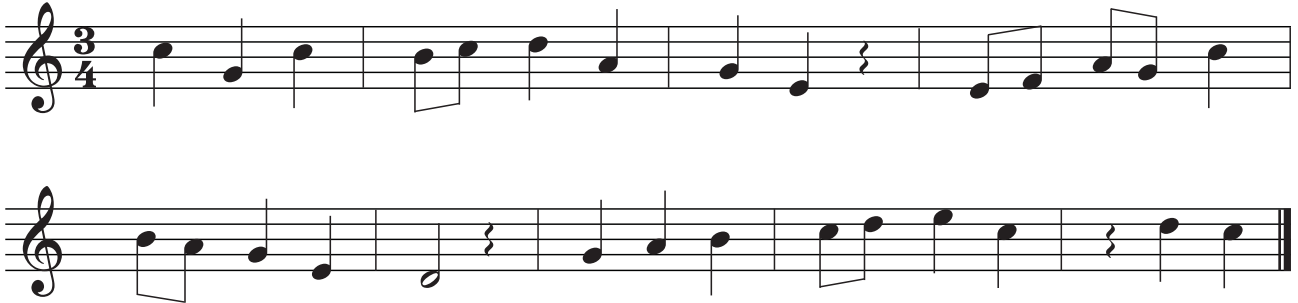
FA

RE

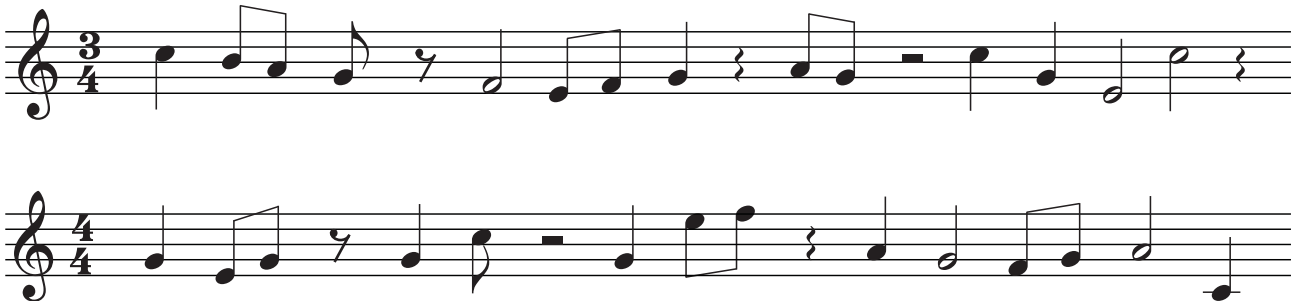
MI

DO

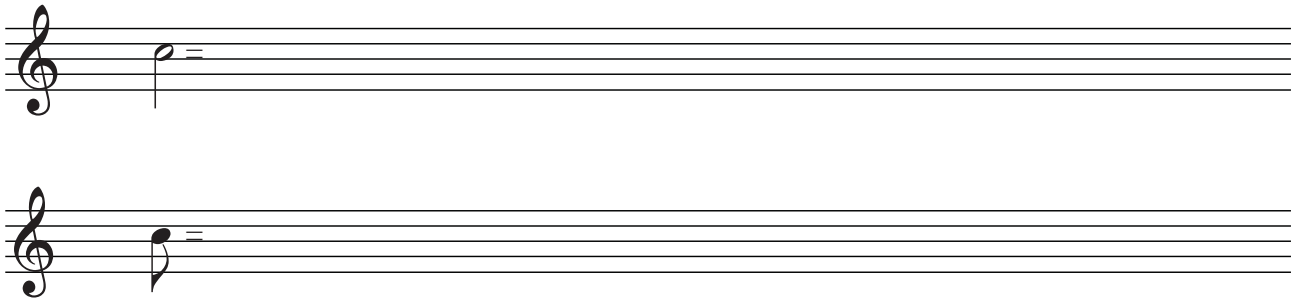
1. Dividir la melodia en frases i assenyalar si els seus finals són suspensius o conclusius:



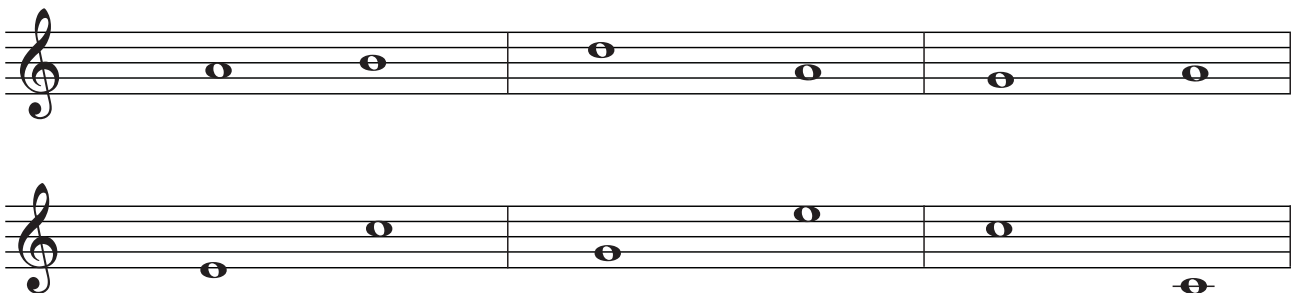
2. Escriure les línies divisòries:



3. Equivalència fins les semifuses:



4. Intervals:

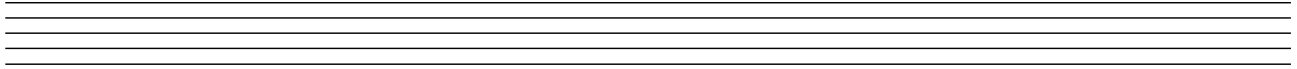


1. Escriure els silencis de:

SEMICORXERA

NEGRA

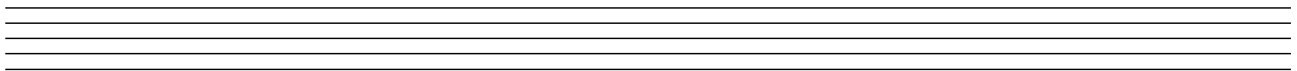
CORXERA



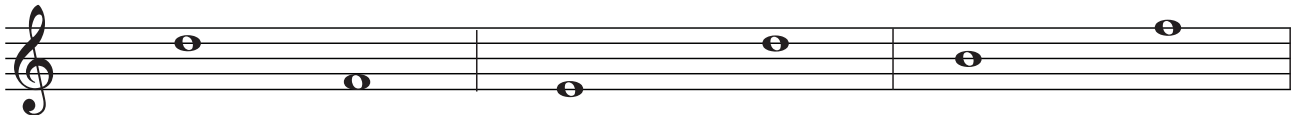
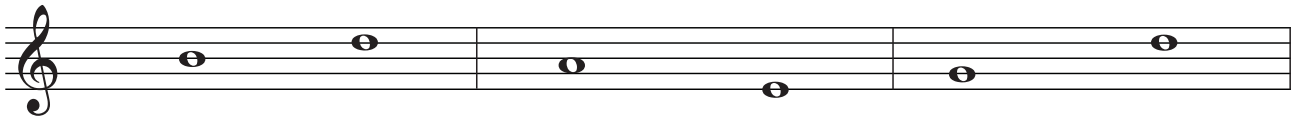
BLANCA

RODONA

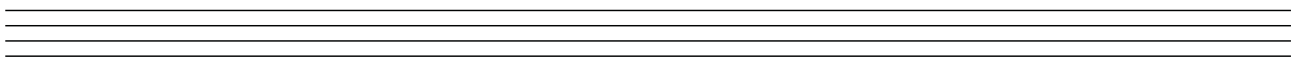
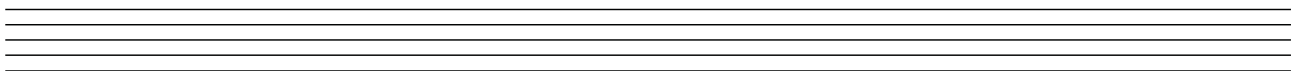
FUSA



2. Intervalls:



3. Completar el compàs $\frac{4}{4}$ amb 8 i 12 figures:



4. Notes addicionals superiors:

